



Part II. Political fields after the FUKUSHIMA

Maya TAKIMOTO

M.Sc. Environmental Governance,
Universität Freiburg

Opinion polls



Before

59.6 %
supported
the nuclear
power
generation

(Japan, Cabinet Office
Public Relations Office,
2009)

After

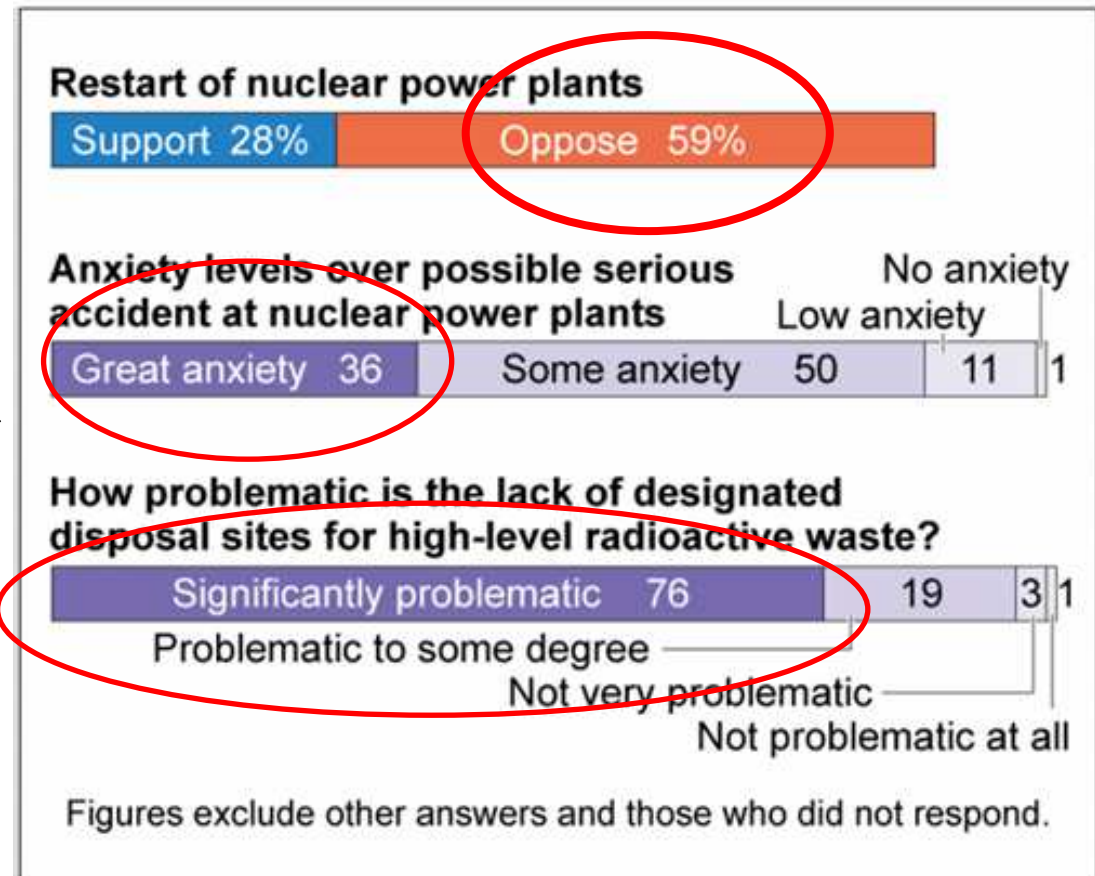
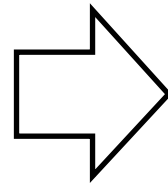


Figure: Opinion poll by the Asahi Shimbun (The Asahi Shimbun, 2014)

Influence of the FUKUSHIMA on society



- ◆ Damage to the citizens' trust on the „**Safety Myth**“
 - ◆ More discussions among citizens in Japanese society
- Government's dishonest reactions reinforced this tendency
- Unclear information provision
 - Avoidance of making the nuclear problem as an important issue for the election
 - Premature lift of the mandatory evacuation order
- Government's reluctance to respond to citizens' voices?

Contents



➤ **Pro-nuclear response**

- 1. Slick change of hype of nuclear energy propaganda**
- 2. The reasons of restart of a nuclear power plant in the policy statements**
- 3. Unclarified and Doubtful points**

1. Slick change of hype of nuclear energy propaganda



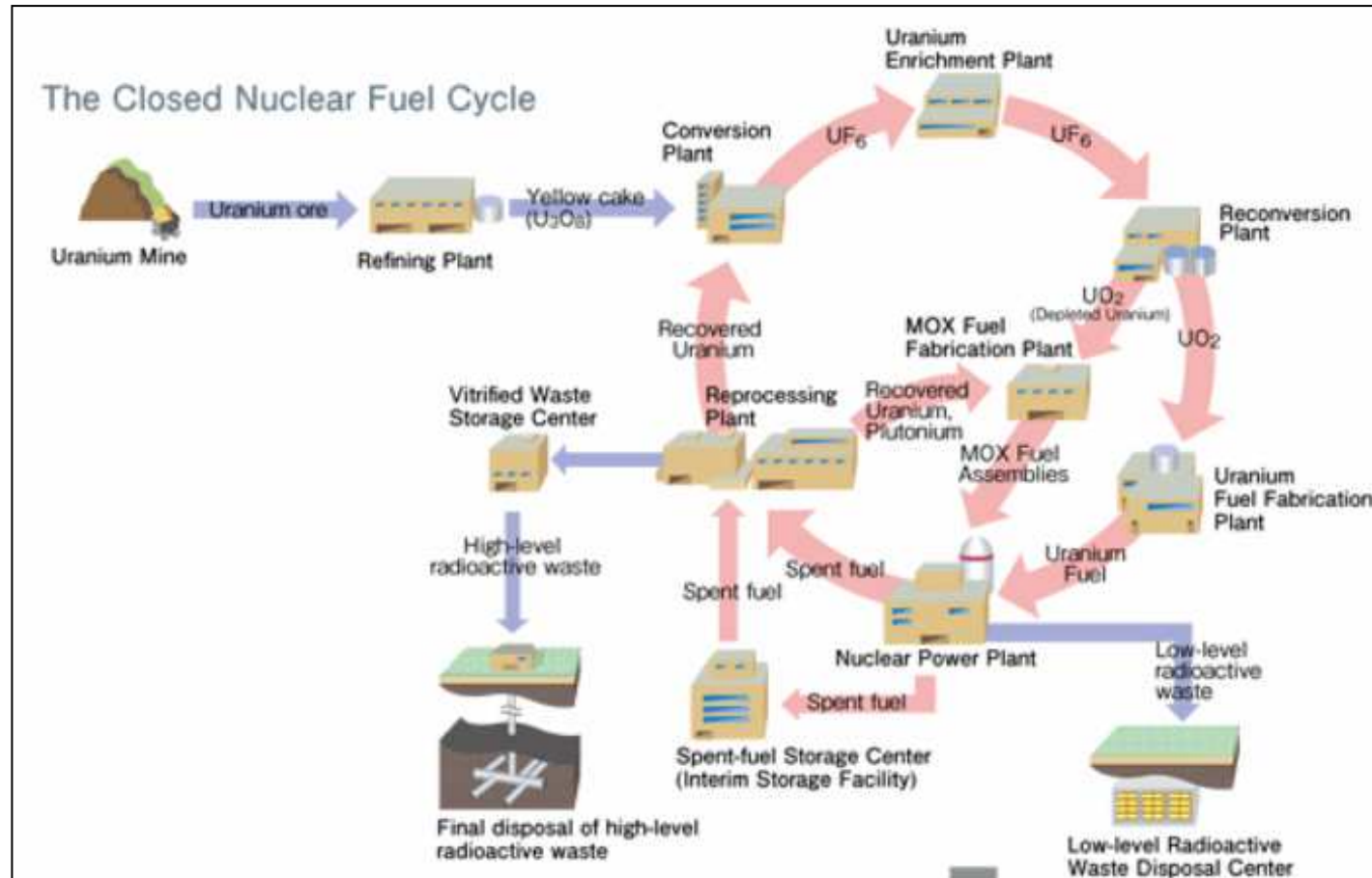
Before the accident:

- Nuclear power is very **SAFE** (**Myth of Absolute safety**)
- Nuclear power generation accounts for **A THIRD** of energy generation in Japan
- Nuclear power is **CLEAN** energy
- Nuclear power is **RENEWABLE** energy (**Promotion of nuclear fuel cycle**)

Nuclear fuel cycle by plutonium-thermal project



Pie in the sky?



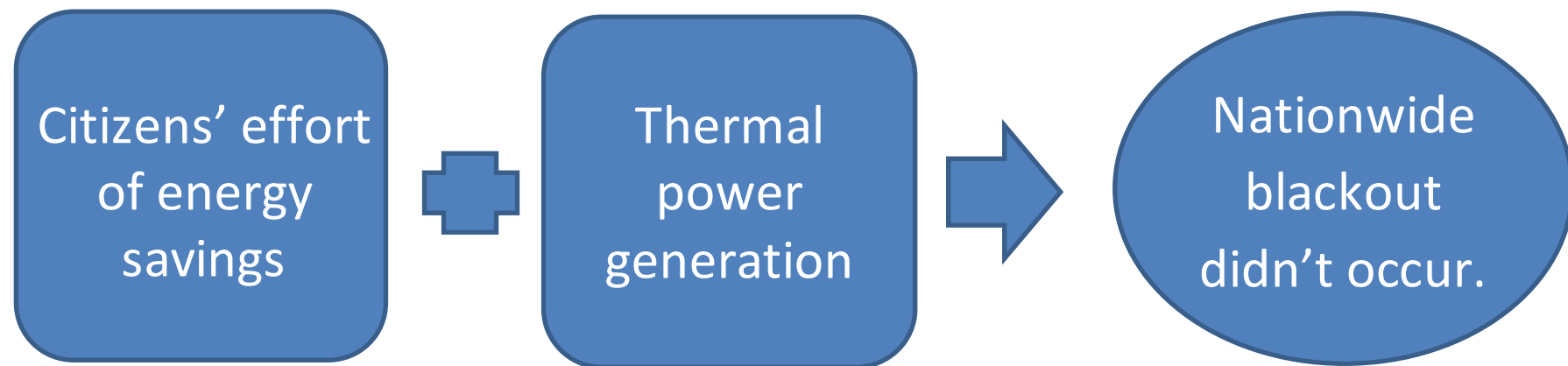
Source: The Federation of Electric Power Companies of Japan

1. Slick change of hype of nuclear energy propaganda



Right after the accident :

When nuclear power plants are stopped, **huge blackout** happens all over Japan and then the Japanese economy will **collapse**.



1. Slick change of hype of nuclear energy propaganda



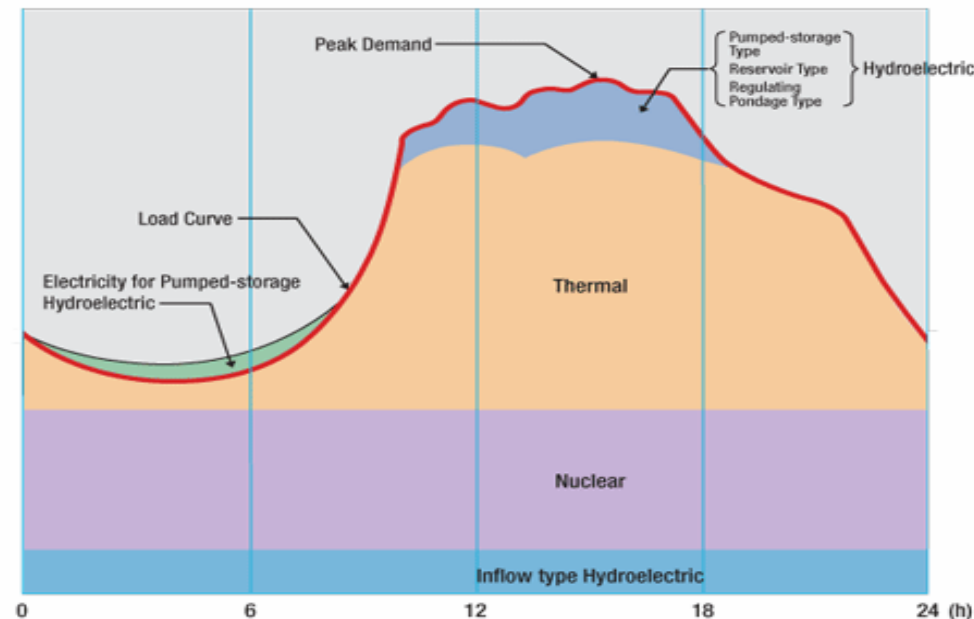
3-4 years after the accident:

- 1) “Pure domestically produced energy source with greatly stable supply and efficiency”
- 2) Thermal power generation is not environmental friendly in terms of CO2 emissions.
- 3) Import of expensive resources exhausts the national wealth
- 4) Health hazard (also damage to the crops) are not confirmed ,even didn't occur.



1) “Pure domestically produced energy source with greatly stable supply and efficiency”
= “Base load” power source

Optimal Combination of Power Sources to Correspond to Demands

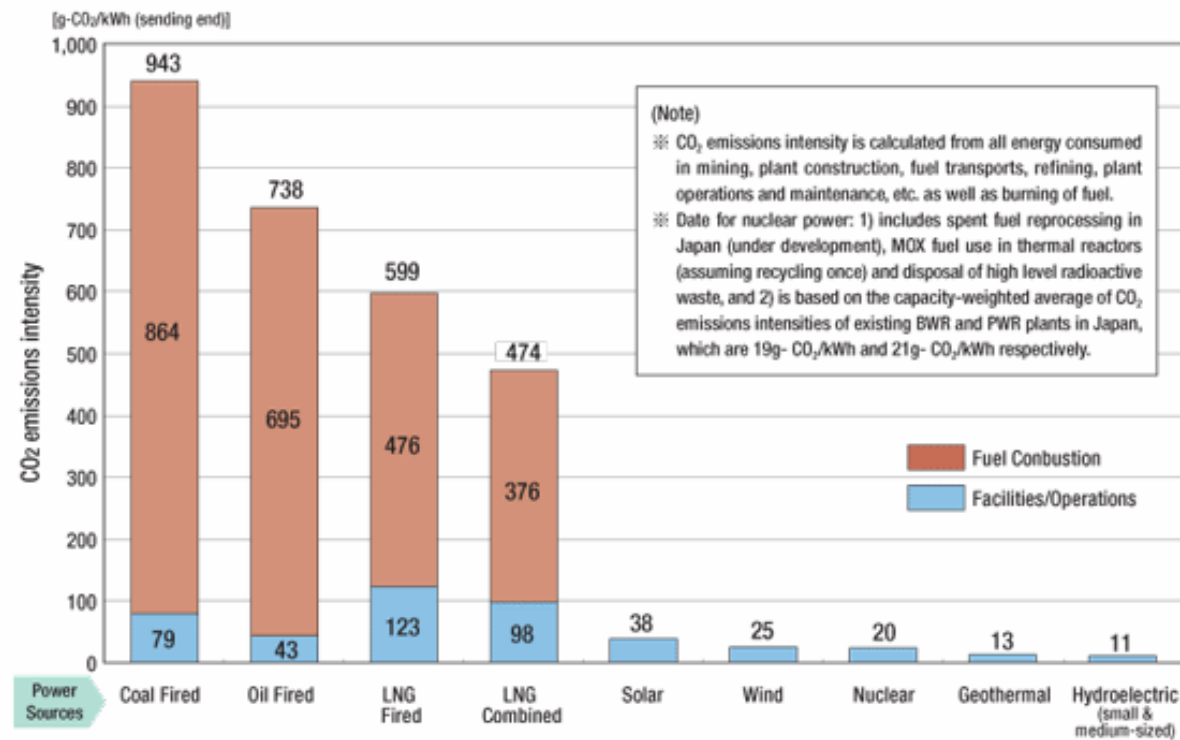


Source: The Federation of Electric Power Companies of Japan



2) Thermal power generation is not environmental friendly in terms of CO₂ emissions.

Lifecycle Assessment CO₂ Emissions Intensity for Japan's Energy Source

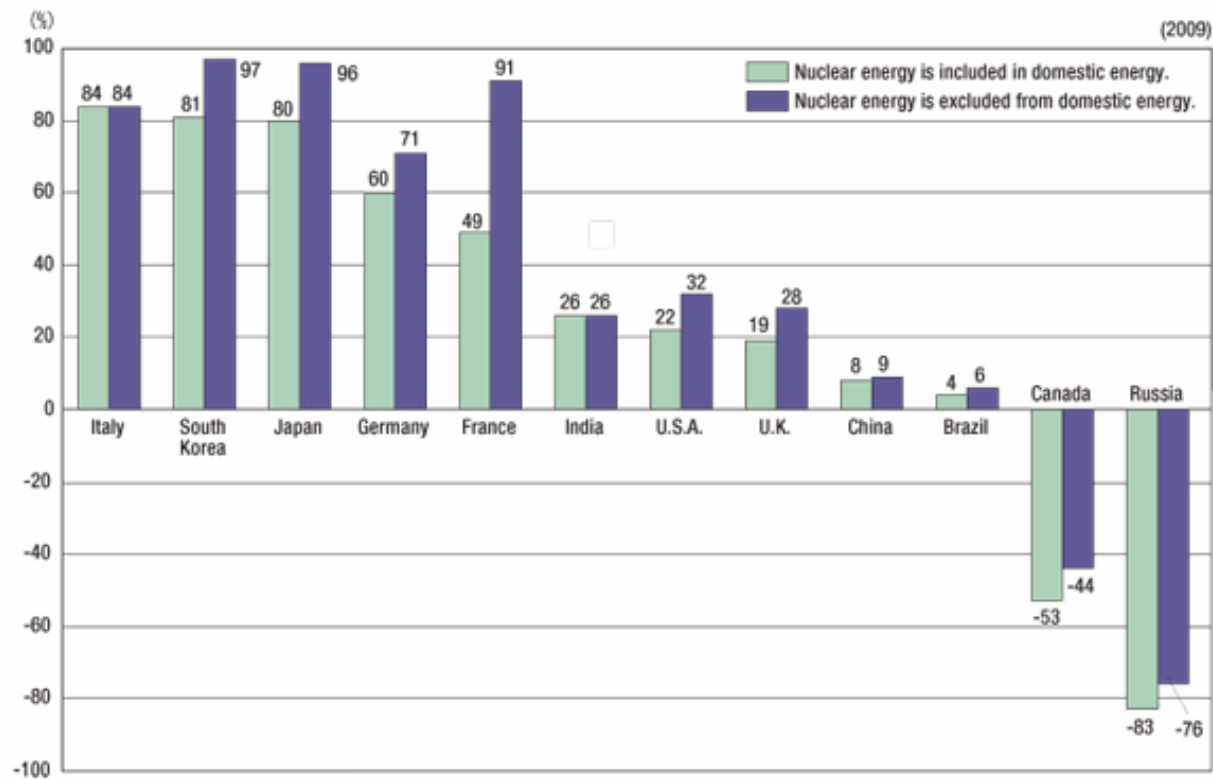


Source: The Federation of Electric Power Companies of Japan



3) Import of expensive resources exhausts the national wealth

Dependence on Imported Energy Sources in Major Countries



(Note) Canada and Russia are net-exporting countries.

Source: The Federation of Electric Power Companies of Japan



2. The reasons of restart of a nuclear power plant in the policy statements

4 Basic principles in the energy policy

Safety

Energy security

Improving Economic Efficiency

Environmental Suitability



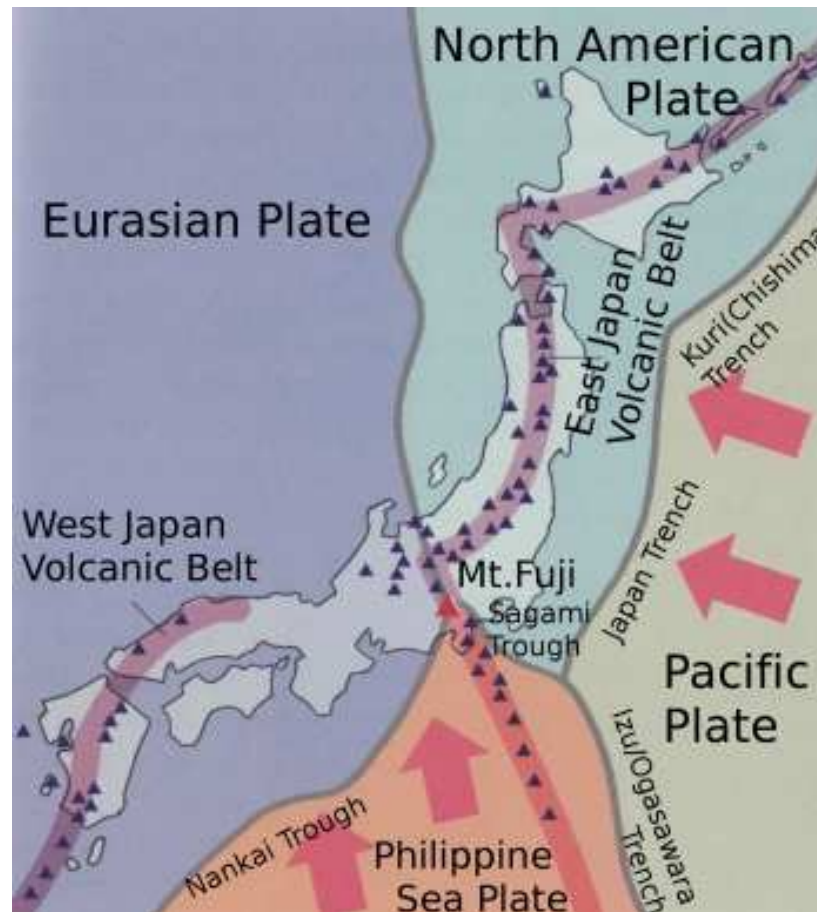
3. Unclarified and Doubtful points

- Where does responsibility lie?
- Who should pay the price for the price for the possibility of an accident and for the nuclear waste?

3. Unclarified and Doubtful points



Earthquake prone island!!!



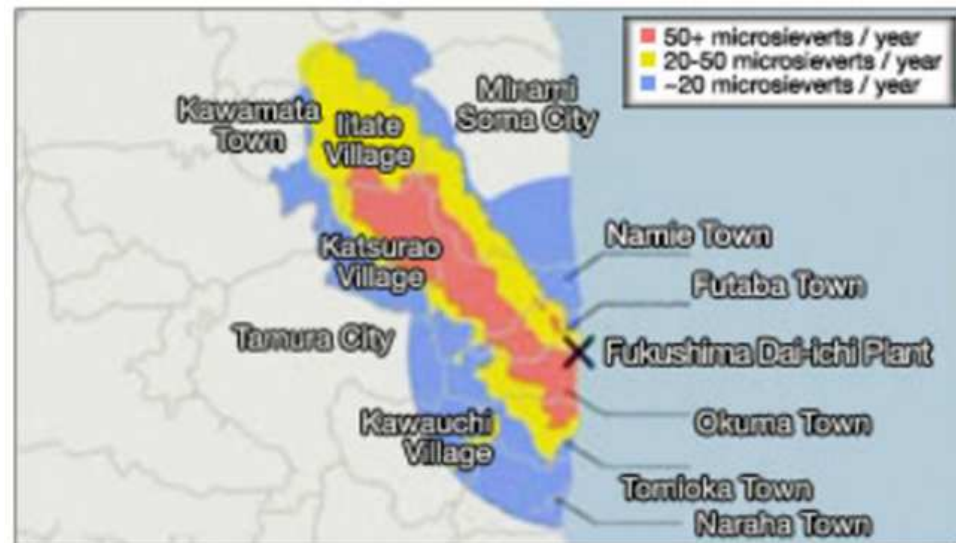
Source: Mt. Fuji (<http://mtfujigeo1202.blogspot.de/>)



“Resuming operation of a nuclear power plant without/before determining the cause of the FUKUSHIMA accident is not allowed scientifically and ethically.”

- Tamotsu Baba, mayor of Namie Town*

* All residents of Namie town (about 19,000 people) still have to evacuate from their town.



References



The Asahi Shimbun. (2014). ASAHI POLL: 59% oppose restart of nuclear reactors. The Asahi Shimbun, [online], March 18, available at: <https://ajw.asahi.com/article/0311disaster/fukushima/AJ201403180058> [accessed on August 31, 2015].

Japan, Agency for Natural Resources and Energy. (2015). Long-term Energy Supply and Demand Outlook Outline (draft) [Japanese], [online], available at: http://www.enecho.meti.go.jp/committee/council/basic_policy_subcommittee/mitoshi/010/ [accessed on August 22, 2015].

Japan, Cabinet Office Public Relations Office. (2009). *Overview of special opinion poll about the nuclear power* [Japanese]. November 26. Tokyo: Cabinet Office Public Relations Office.

Japan, Chief Cabinet Secretary. (2015). *Press Conference by the Chief Cabinet Secretary (Excerpt)*, [online], August 10, available at: http://japan.kantei.go.jp/tyoukanpress/201508/10_a.html [accessed on September 7, 2015].

Japan, Chief Cabinet Secretary. (2014-2015). *Press Conference by the Chief Cabinet Secretary* [Japanese], [online], available at: <http://www.kantei.go.jp/jp/tyoukanpress/index.html> [accessed on August 29, 2015].

Japan, Ministry of Economy, Trade and Industry. (2014-2015). *Press Conference by the Minister of Economy, Trade and Industry* [Japanese], [online], available at: http://www.meti.go.jp/speeches/kaiken_kako.html [accessed on August 30, 2015].

Japan, Ministry of Economy, Trade and Industry. (2014a). *Strategic Energy Plan (Provisional Translation)*, [online], available at: http://www.enecho.meti.go.jp/en/category/others/basic_plan/pdf/4th_strategic_energy_plan.pdf [accessed on August 22, 2015].

Japan, Ministry of Economy, Trade and Industry. (2014b). *Cabinet Decision on the New Strategic Energy Plan*, [online], available at: http://www.meti.go.jp/english/press/2014/0411_02.html [accessed on September 2, 2015].

Japan, Prime Minister of Japan and His Cabinet. (2014-2015). *Press Conference by the Prime Minister* [Japanese], [online], available at: http://www.kantei.go.jp/jp/97_abe/statement/index.html [accessed on August 19, 2015].

Honma, R. (2015). Nuclear Power Propaganda. *Sekai August*.

The Federation of Electric Power Companies of Japan, <http://www.fepc.or.jp/index.html> [accessed on 21/10/2015]